

SYSTEM 42

PRIODOOR ETX RDA

Smoke damper

Large-size, single-vent, fire resistant, specially designed for installation in RDA outlet ducts (RDA = Smoke protection pressure systems). The aim of the application is to keep safety staircases smoke-free. When a fire occurs, the exhaust damper is automatically opened by the control unit of the RDA supplied by the customer. Large-size cross sections offer a free unhindered outlet surface area for combustion gases. The closure is smoke-proof and offers fire resistance for up to 90 minutes.

Function

- Tested as a smoke damper
- Fire resistance 90 minutes
- Classification EI 90 (V_{ed} – i ↔ o) S500C10000 AAmulti
- Smoke protection
- Tight seal
- Pressure / suction stable up to 500 Pa
- Sound reduction index depending on size up to 36 dB



■ Door fitting and chain drive



■ Many surfaces possible, see pages 44



■ Circumferential fire and smoke protection seals

Construction

- Single panel shaft closing with high mechanical durability
- Flush-fitting assembly in solid shaft walls with assembly frames
- Free large format flow surface
- External construction height from 1134 mm to 2500 mm, depending on wall systems
- External construction width from 500 mm to 1,000 mm
- Folded block frame: three sided 64 mm, locking side 139 mm
- All round smoke and fire protection seals, automatically foams in the event of fire
- High-quality stainless steel bands

Drive

- Opened and closed by chain drive
- System voltage 24 V DC
- Power consumption 40 mA, max. 1 A in cut-out torque
- With integrated adjustable limit switch; standard: „End position“ open
- Lock with power cut-off
- Chain drive adjusted by software
- Connector cable chain drive 6-pole, 3.00 m (2 conductors each for drive, limit and programming)

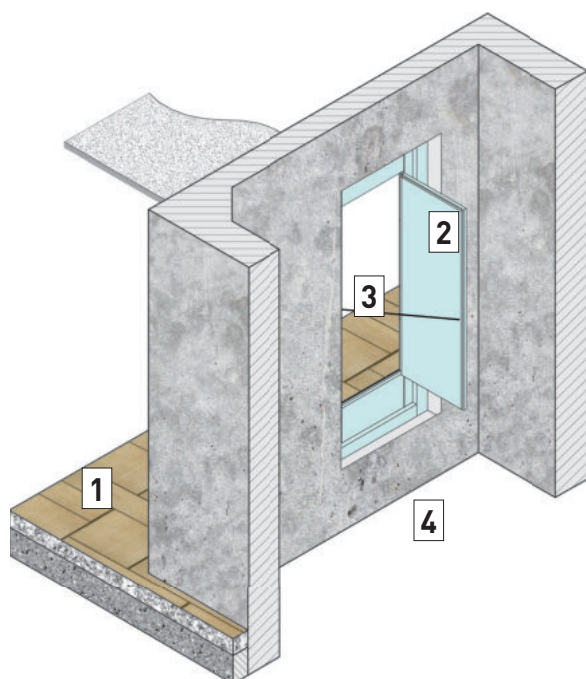
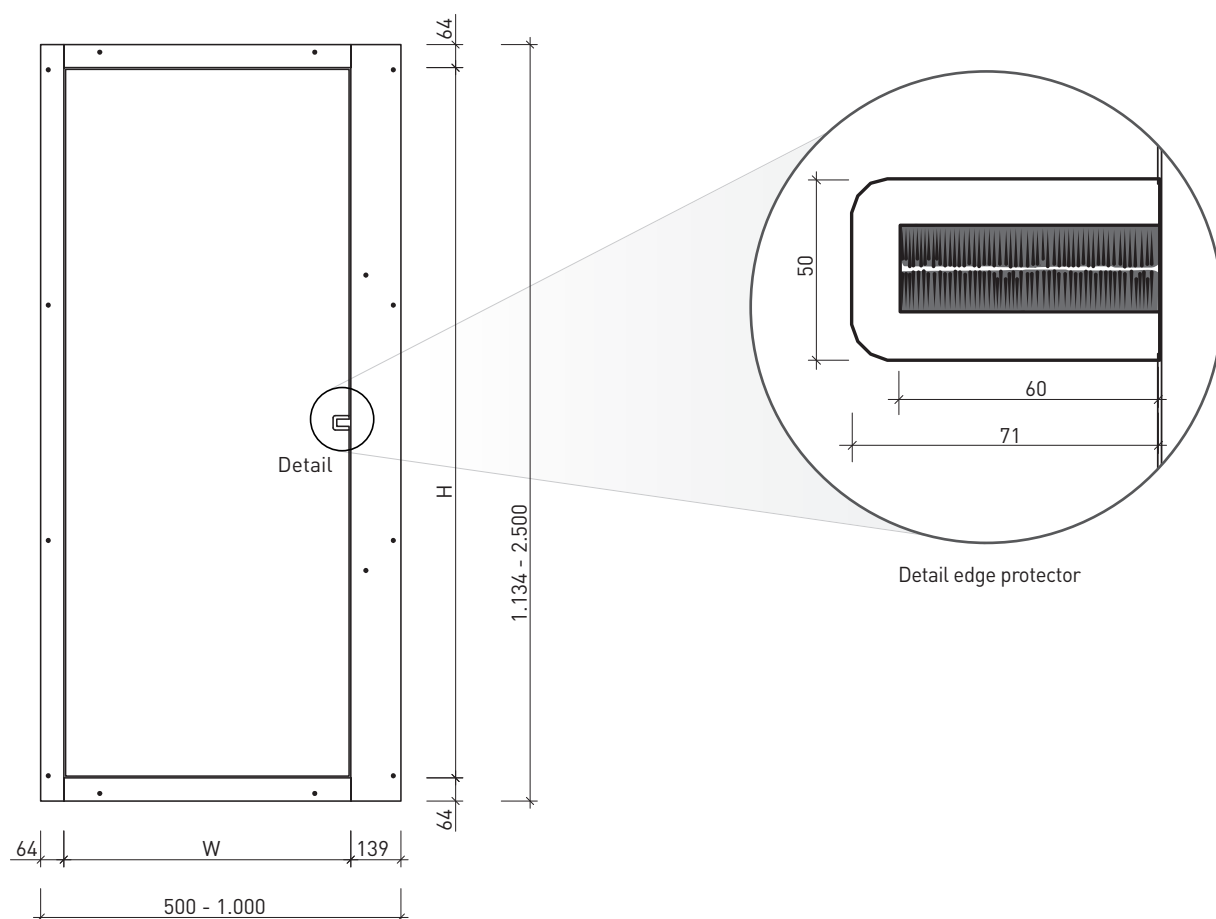
Material characteristic

- Non-combustible board with surface coating, classification A2 - s1, d0
- Standard CPL surface
- Standard colour light grey - similar to RAL 7035, coloured edges and chamfers

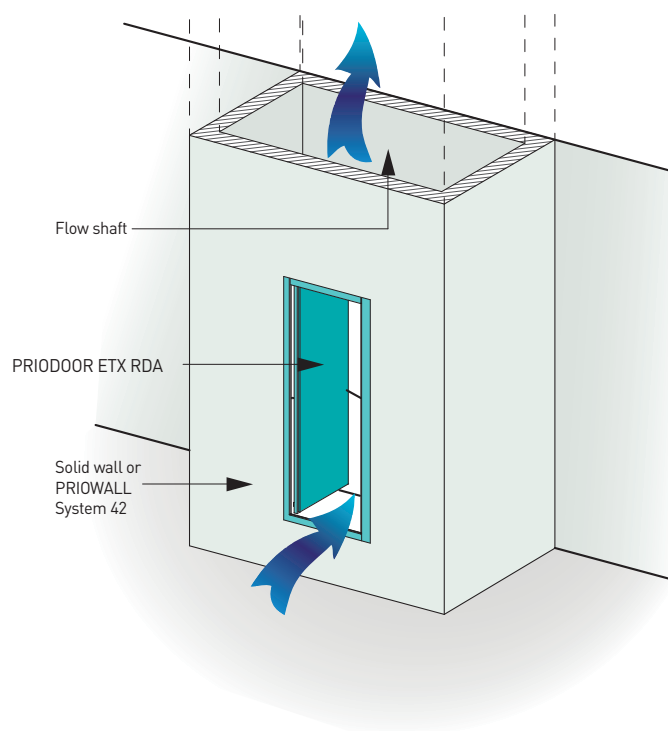
Scope of delivery







- Smoke damper
- Assembly frame
- Chain drive with connector cable (3.00 m)
- Attachment material

PRIODOOR ETX RDA Smoke damper




- 1 Escape route / utilisation unit
- 2 Smoke damper PRIODOOR ETX RDA
- 3 Chain drive
- 4 Flow shaft



Art.	 H x W mm	 H x W mm	 H x W mm	 ¹⁾ kg	 DIN
ETX-RDA-FK91-SAF	Individual custom production: external height 1134 – 2500 mm and external width 500 – 1000 mm; flow surface depends on the door panel size and the aperture angle 				
Fire resistance 90 Minuten					
ETX-RDA – 1-leaf, flush with the adjacent areas					
ETX-RDA-FK91-115-050	1150 x 500	1022 x 297	1170 x 520	62	R
ETX-RDA-FK91-135-070	1350 x 700	1222 x 497	1370 x 720	86	R
ETX-RDA-FK91-150-080	1500 x 800	1372 x 597	1520 x 820	102	R
ETX-RDA-FK91-180-090	1800 x 900	1672 x 697	1820 x 920	129	R
ETX-RDA-FK91-210-100	2100 x 1000	1972 x 797	2120 x 1020	160	R

¹⁾ Weight without assembly frames

Further sizes are available in our design tool at www.priorit.de 

Options and accessories

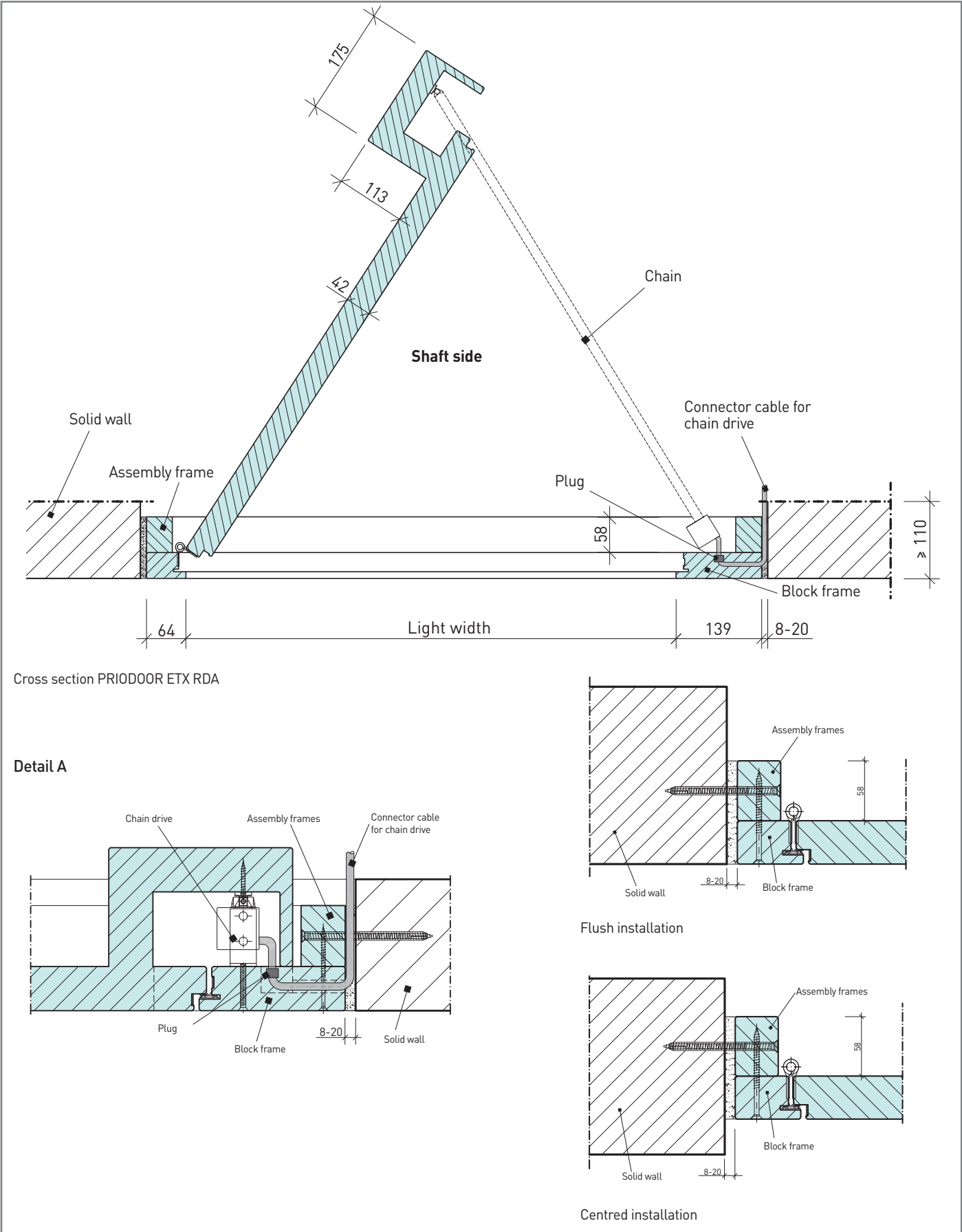


■ Commissioning set

Art.	Accessories
ETX-RDA-SCHUTZ	Protective plate for smoke extraction flap, adapted to the respective external dimensions of the element - incl. 2 fixing holes - Material MDF board
ETX-RDA-SET	Commissioning set – For functional testing and adjustment of the driving on site; consisting of: connection box with 24V power supply, programming set

You can find the tender text at: www.priorit.de

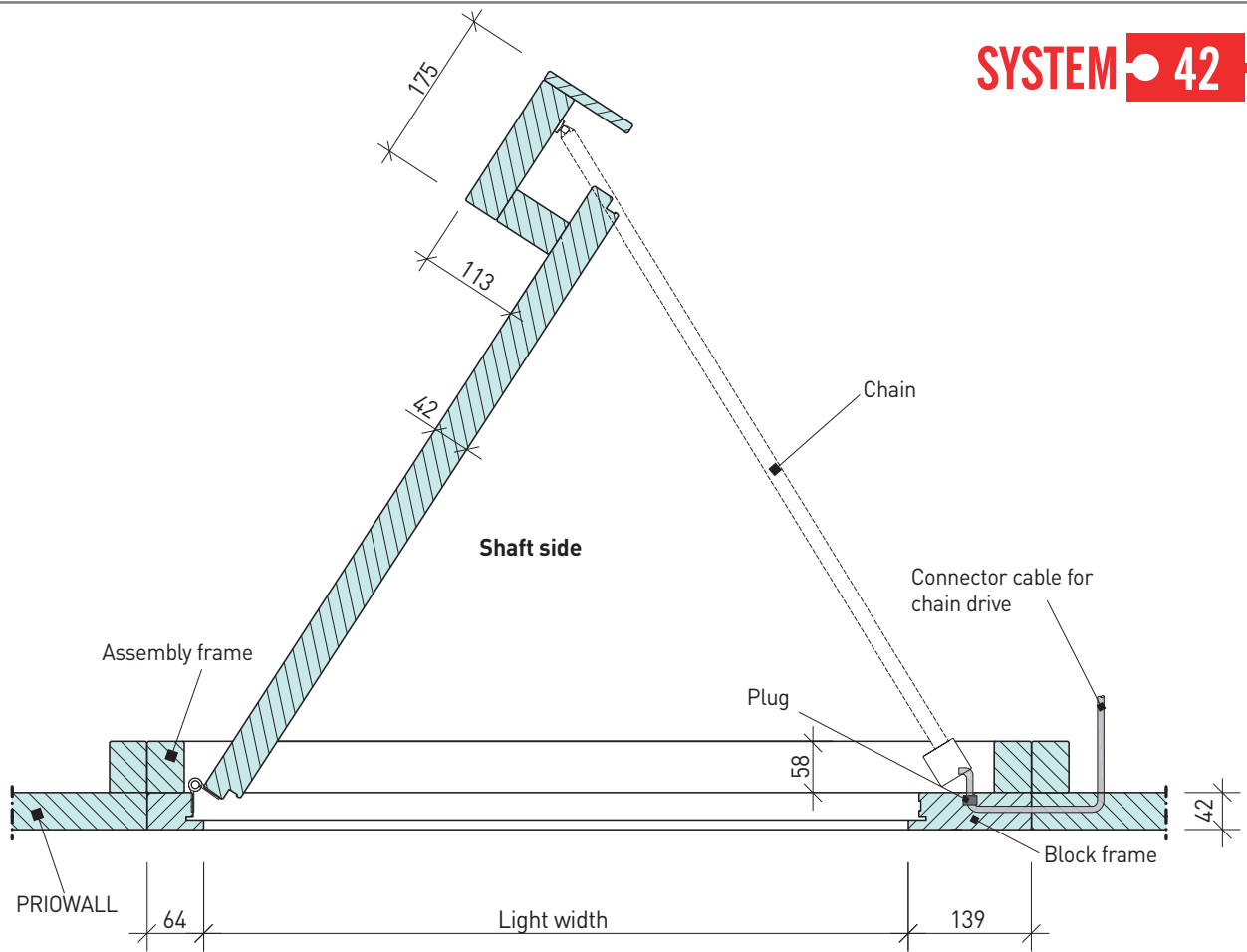
Installation in solid wall



Schematic illustrations, without scale

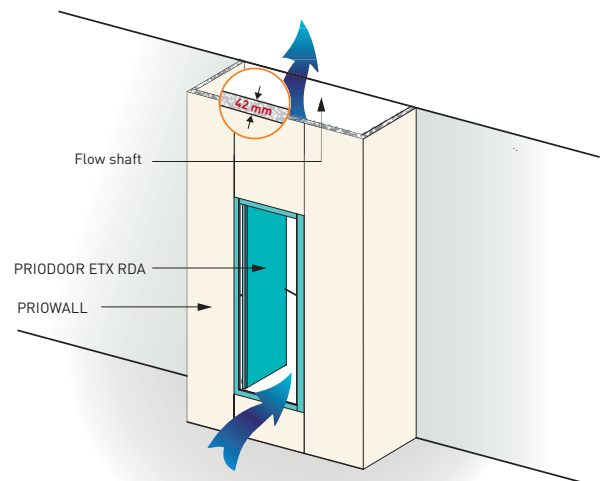
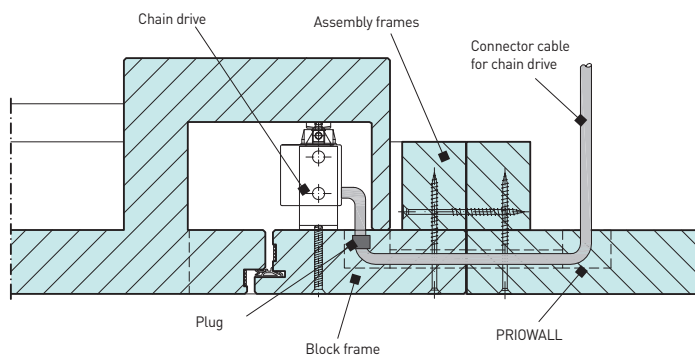
Installation in PRIOWALL

SYSTEM 42



Cross section PRIODOOR ETX RDA

Detail B



Schematic illustrations, without scale