



**Fire
Resistance
30 Min.**



**Smoke
Protection
min leakage**



**Material
+ Decor
A2 Class**



PRIOLEC EHL30

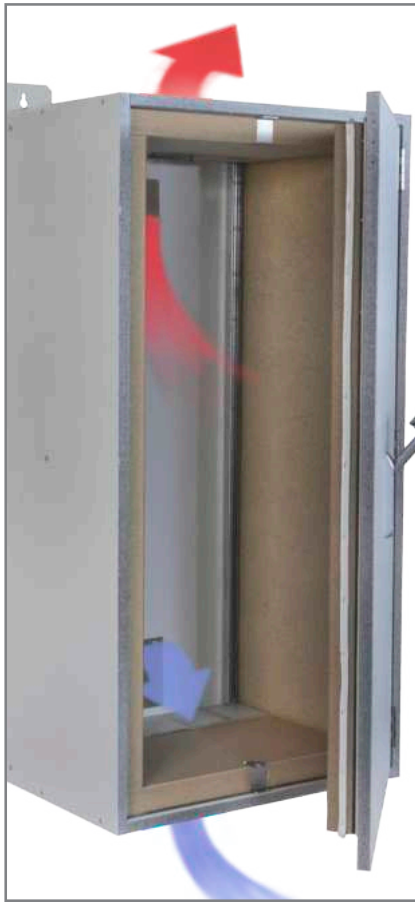
Electro Hanging Cabinet

PRIORIT electro hanging cabinet in single-leaf design, suitable for maintenance of performance of safety systems in the event of fire for 30minutes. The housing is made of non-combustible fire protection panels of class A2 - s1, d0. As standard, cabinets are equipped with a ventilation system in the rear wall, top and bottom cable entry. The inside dimensions are based on the standard distribution panels and mounting plates.

Proof of functional integrity must be provided in accordance with MLAR.

Function

- Fire resistance of 30min, fire-retardant
- Suitable for maintenance of performance for 30 minutes
- Smoke protection, cold-smoke-proof
- Empty housing tested and certified by the VDE testing institute according to DIN EN 62208
- Protection class: IK10, IP 44
- Protection class II
- CE marking



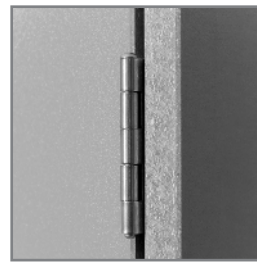
■ Ventilationprinzip



■ Cable insertion from above



■ Swing lever and double-bit cylinder



■ Removable stainless steel door hinges

Construction

- Empty housing featuring high mechanical resistance
- Integrated ventilation system consisting of fan, smoke alarm and thermocouple, installed ready for connection (230 VAC)
- Cold smoke-tight sealing system via smoke alarm
- Door hinges made from stainless steel
- Door can be unhinged
- Door hinge can be changed on site
- Door integrated into body, opening angle approx. 180°
- 2-point door lock via pivot lever with double-bit cylinder (can be replaced with home locking system)
- Circumferential fire protection seal, foams automatically in case of fire
- Cable feed top + bottom for bundle insertion
- Fixing rails for installation of device support brackets or mounting plate

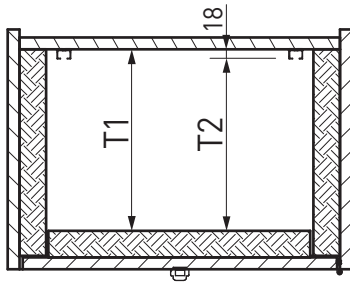
Material characteristic

- Non-combustible board with surface coating, classification A2 – s1, d0
- Standard CPL surface
- Colour light grey, similar to RAL 7035, edges and bevels in different colour

Scope of delivery

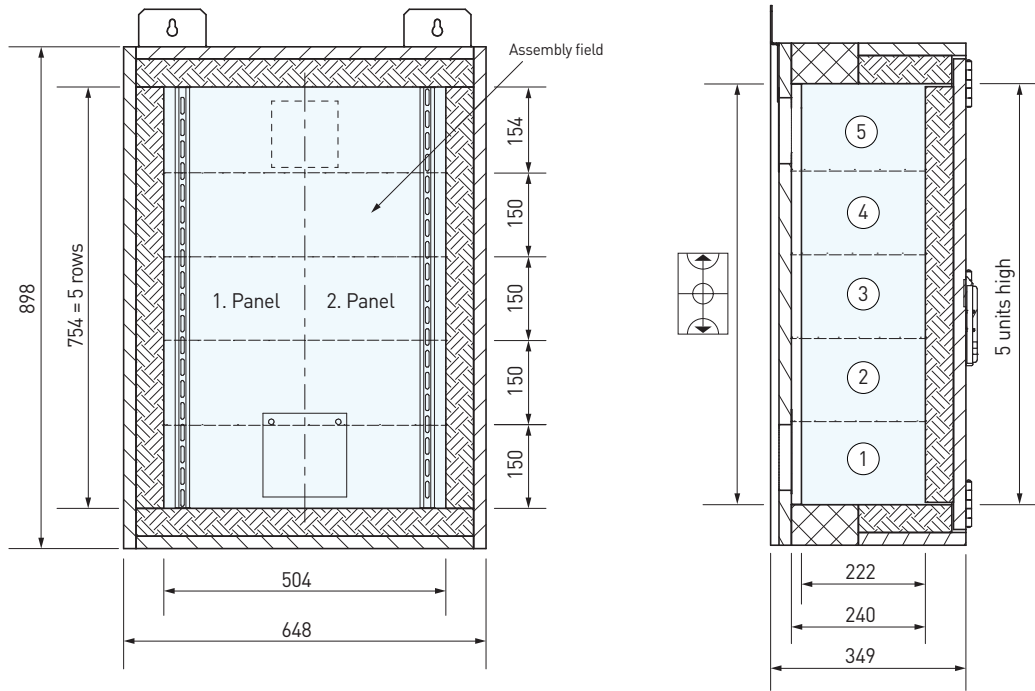
- Empty enclosure, with integrated thermal fuse

Effective internal dimensions

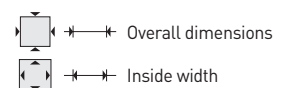
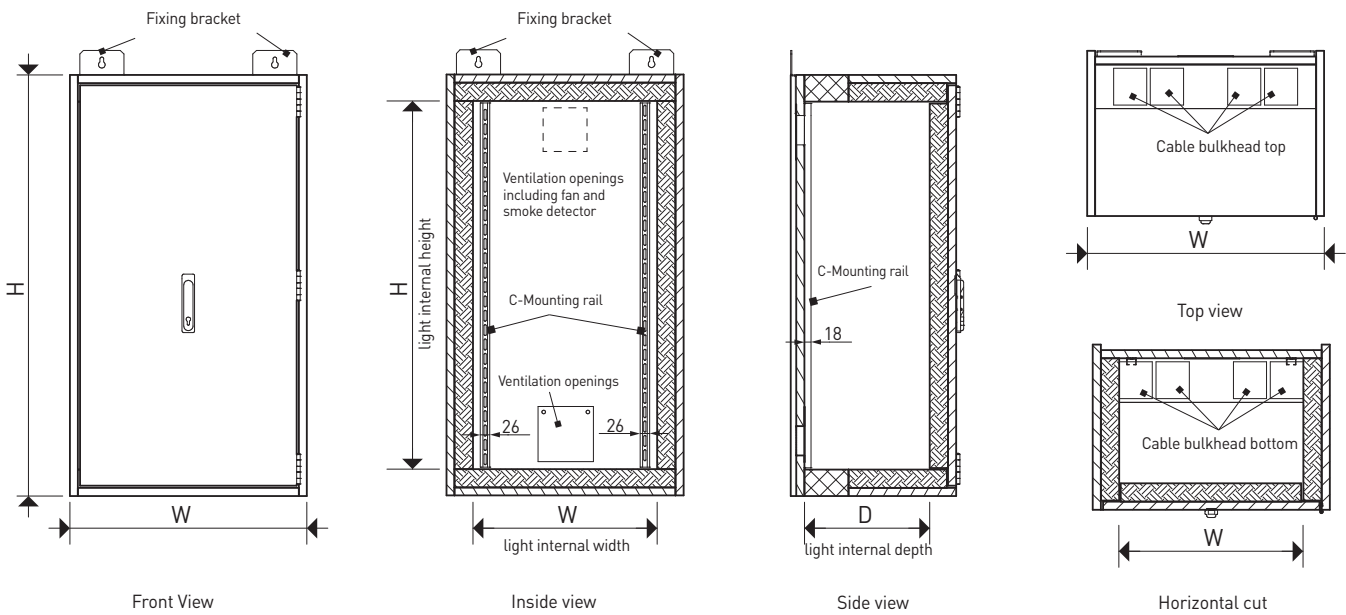


Interior depth cabinet D1 mm	Effective internal depth D2 mm
240	222
340	322

Standard cabinet EHL



Useful interior space based on the example of an PRIOLEC EHL31.05224



Art.								
x = DIN 7	H x W x D mm	H x W x D mm	kg	P _{Vmax} = W	DIN = x			

30 Minuten Feuerwiderstandsfähigkeit Non-binding lead time approx. 2 weeks (depending on order quantities).

Interior depth 240 mm									
EHL31.03124-x	598 x 398 x 349	454 x 254 x 240	51	112	L/R	2 (3)	1	24	
EHL31.03224-x	598 x 648 x 349	454 x 504 x 240	71	114	L/R	2 (3)	2	48	
EHL31.04124-x	748 x 398 x 349	604 x 254 x 240	62	113	L/R	3 (4)	1	36	
EHL31.04224-x	748 x 648 x 349	604 x 504 x 240	85	115	L/R	3 (4)	2	72	
EHL31.05124-x	898 x 398 x 349	754 x 254 x 240	73	113	L/R	4 (5)	1	48	
EHL31.05224-x	898 x 648 x 349	754 x 504 x 240	99	116	L/R	4 (5)	2	96	
EHL31.06124-x	1048 x 398 x 349	904 x 254 x 240	83	114	L/R	5 (6)	1	60	
EHL31.06224-x	1048 x 648 x 349	904 x 504 x 240	114	117	L/R	5 (6)	2	120	
EHL31.06324-x	1048 x 898 x 349	904 x 754 x 240	144	121	L/R	5 (6)	3	180	
EHL31.07124-x	1198 x 398 x 349	1054 x 254 x 240	94	114	L/R	6 (7)	1	72	
EHL31.07224-x	1198 x 648 x 349	1054 x 504 x 240	128	118	L/R	6 (7)	2	144	
EHL31.07324-x	1198 x 898 x 349	1054 x 754 x 240	163	124	L/R	6 (7)	3	216	
EHL31.08124-x	1348 x 398 x 349	1204 x 254 x 240	105	115	L/R	7 (8)	1	84	
EHL31.08224-x	1348 x 648 x 349	1204 x 504 x 240	143	120	L/R	7 (8)	2	168	
EHL31.08324-x	1348 x 898 x 349	1204 x 754 x 240	181	126	L/R	7 (8)	3	252	
EHL31.09124-x	1498 x 398 x 349	1354 x 254 x 240	115	115	L/R	8 (9)	1	96	
EHL31.09224-x	1498 x 648 x 349	1354 x 504 x 240	157	121	L/R	8 (9)	2	192	
Interior depth 340 mm									
EHL31.04234-x	748 x 648 x 449	604 x 504 x 340	101	117	L/R	3 (4)	2	72	
EHL31.05234-x	898 x 648 x 449	754 x 504 x 340	117	119	L/R	4 (5)	2	96	
EHL31.06234-x	1048 x 648 x 449	904 x 504 x 340	133	120	L/R	5 (6)	2	120	
EHL31.06334-x	1048 x 898 x 449	904 x 754 x 340	167	128	L/R	5 (6)	3	180	
EHL31.07234-x	1198 x 648 x 449	1054 x 504 x 340	150	123	L/R	6 (7)	2	144	
EHL31.07334-x	1198 x 898 x 449	1054 x 754 x 340	187	131	L/R	6 (7)	3	216	
EHL31.08234-x	1348 x 648 x 449	1204 x 504 x 340	166	125	L/R	7 (8)	2	168	
EHL31.09234-x	1498 x 648 x 449	1354 x 504 x 340	182	128	L/R	8 (9)	2	192	

You can find the tender text at: www.priorit.de

P_{Vmax} Recommended approximate values for the assembly and installation of a fire-resistant wall. A „derating“ of the electrical equipment must be taken into account. Compliance must be ensured with temperature rise limits in accordance with the applicable DIN EN 61439-1.



Power dissipation in normal operation at ΔT = 13 K (inside 35°C, outside 22°C), with on-site fan



Non-binding lead time approx. 2 weeks (depending on order quantities).

Options and accessories

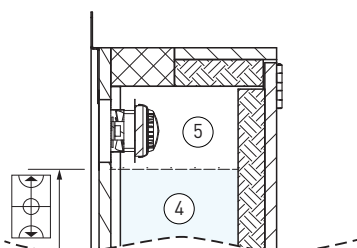
- All PRIORIT surfaces, see page 44

Art.	Accessories
------	-------------

Technical ventilation

EBEL-VENT-L230R2-OT	Ventilation system, consisting of fan and smoke detector, ready for connection (230 V AC)
EBEL-VENT-L24R2-OT	Ventilation system, consisting of fan and smoke detector, ready for connection (24 V DC)

Example:



If the EBEL-VENT-L230R2-OT or EBEL-VENT-L24R2-OT fan unit is retrofitted, the usable height is reduced by one height unit.

