

**Fire
Resistance
90 Min.**



**Smoke
Protection
min leakage**



**Material
+ Decor
A2 Class**



PRIOLEC ESL90

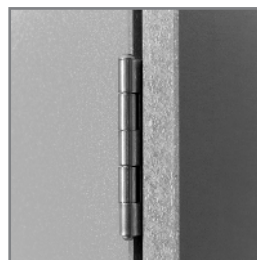
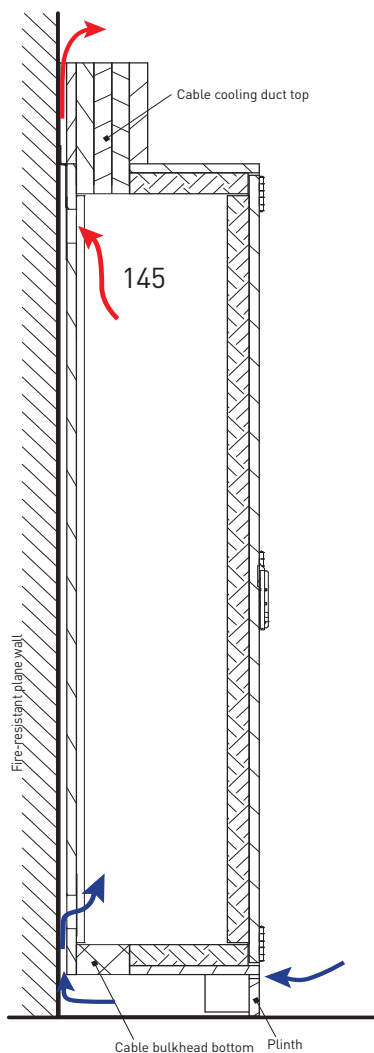
Free-Standing Electrical Cabinets

PRIORIT free-standing electrical cabinets in single-leaf design, suitable for maintenance of performance of safety systems in the event of fire for 90 minutes. The housing is made of non-combustible fire protection panels of class A2 - s1, d0. As standard, cabinets are equipped with a ventilation system in the rear wall, top and bottom cable entry. The inside dimensions are based on the standard distribution panels and mounting plates.

Proof of functional integrity must be provided in accordance with MLAR.

Function

- Fire resistance of 90 min, fire resistant
- Suitable for maintenance of performance for 90 minutes
- Smoke protection, cold-smoke-proof
- Empty housing tested and certified by the VDE testing institute according to DIN EN 62208
- Protection class: IK10, IP 44
- Protection class II
- CE marking



- Removable stainless steel door hinges



- Housing accessible from all sides and with removable front panel

Construction

- Empty housing with high mechanical resistance
- Door hinges made from stainless steel
- Door can be unhinged
- Door hinge can be changed on site
- Door integrated into body, opening angle approx. 180°
- 2-point door lock via pivot lever with double-bit cylinder (can be replaced with home locking system)
- Circumferential fire protection seal, foams automatically in case of fire
- Cable feed top + bottom for bundle insertion
- Cable cooling duct on top
- Fixing rails for installation of device support brackets or mounting plate
- Tilt safe-guard for housing through fixing lugs at top
- Integrated base, can be driven under, with removal front panel

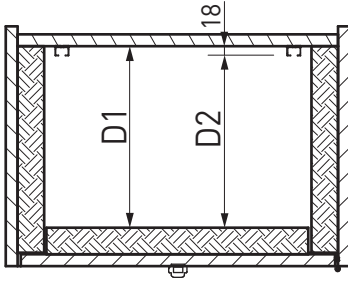
Material characteristic

- Non-combustible board with surface coating, classification A2 – s1, d0
- Standard CPL surface
- Colour light grey, similar to RAL 7035, edges and bevels in different colour

Scope of delivery

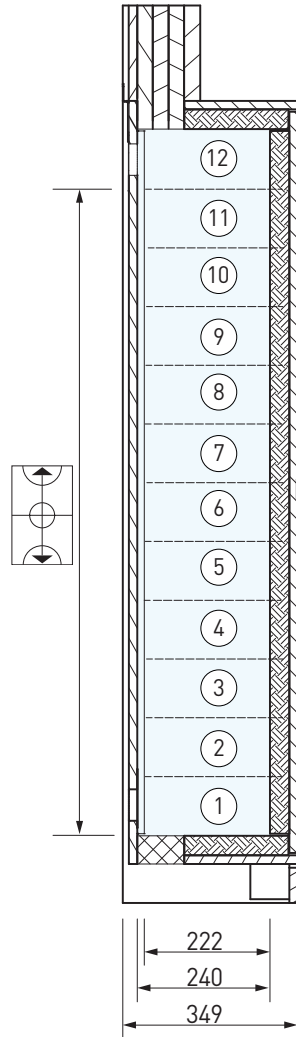
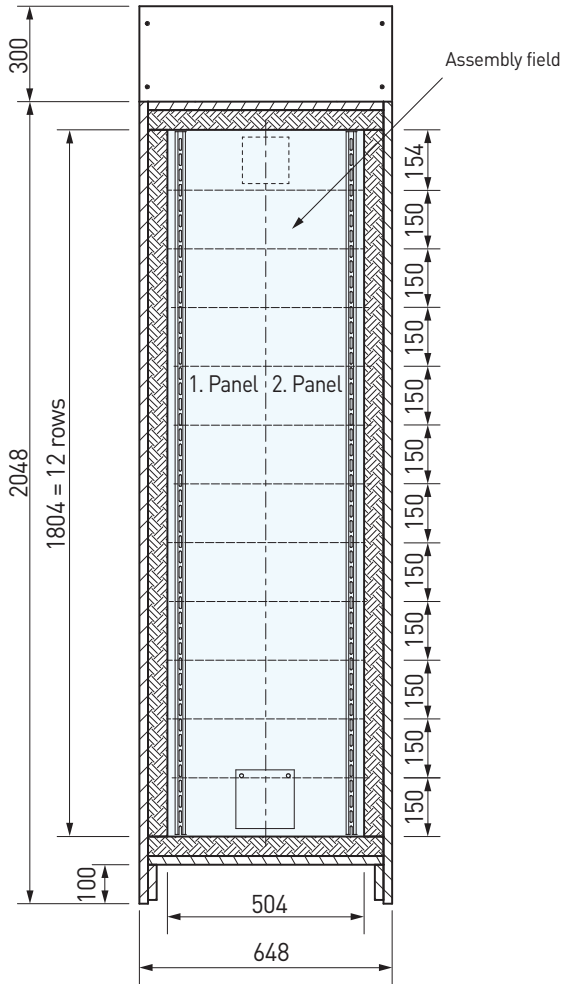
- Empty enclosure, with integrated thermal fuse

Effective internal depth

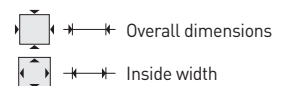


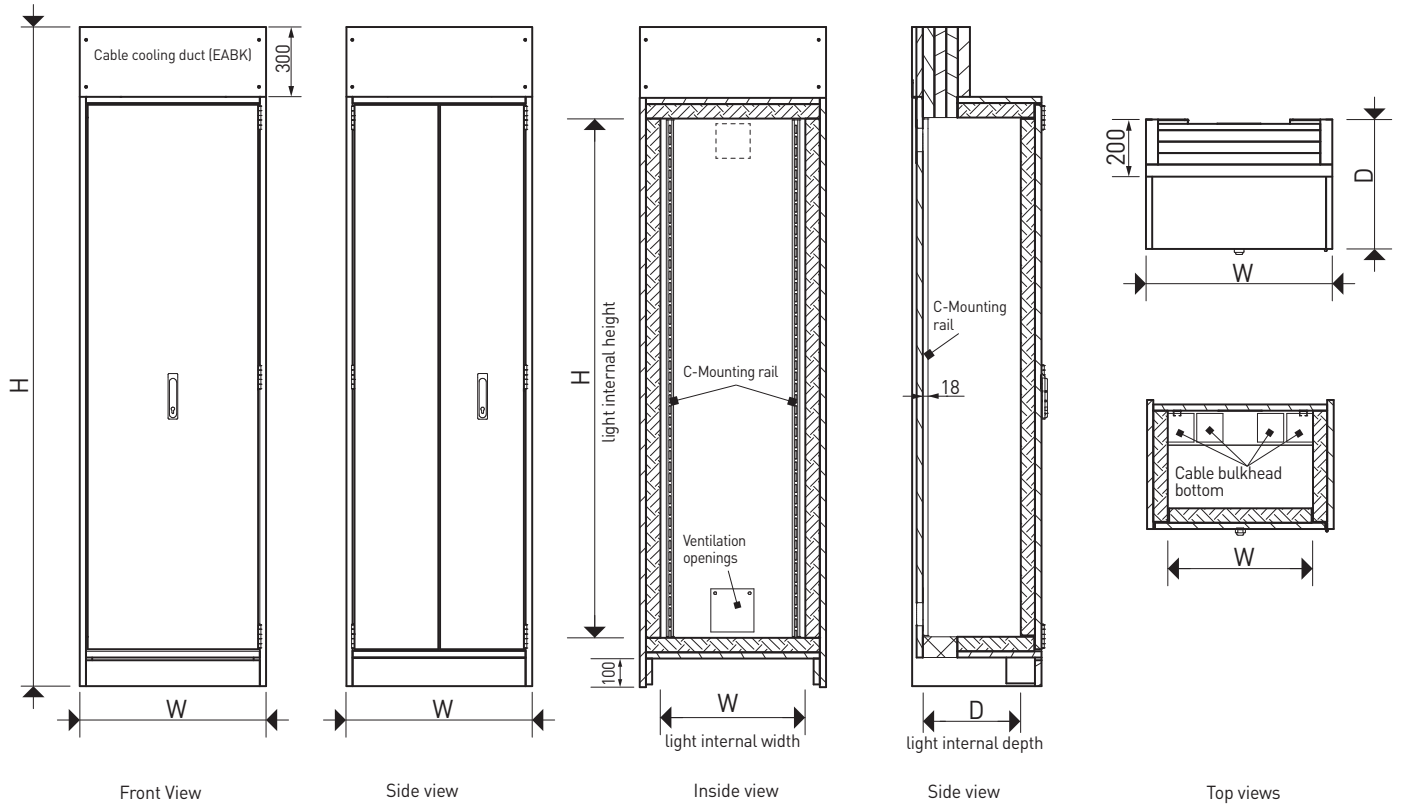
Interior depth cabinet D1 mm	Effective internal depth D2 mm
240	222
440	422

Standard cabinet ESL



Useful interior space based on the example of an PRIOELEC ESL91.12224





Art.	H x W x D mm	H x W x D mm	kg	$P_{Vmax} = W$	DIN = x			
Fire resistance 90 minutes								
Single-leaf, Interior depth 240 mm								
ESL91.12124-x	2348 x 398 x 349	1804 x 254 x 240	172	117	L/R	11 (12)	1	132
ESL91.12224-x	2348 x 648 x 349	1804 x 504 x 240	236	126	L/R	11 (12)	2	264
ESL91.12324-x	2348 x 898 x 349	1804 x 754 x 240	298	139	L/R	11 (12)	3	396
ESL91.13124-x	2498 x 398 x 349	1954 x 254 x 240	183	118	L/R	12 (13)	1	144
ESL91.13224-x	2498 x 648 x 349	1954 x 504 x 240	250	128	L/R	12 (13)	2	288
ESL91.13324-x	2498 x 898 x 349	1954 x 754 x 240	317	143	L/R	12 (13)	3	432
Single-leaf, Interior depth 440 mm								
ESL91.12244-x	2348 x 648 x 549	1804 x 504 x 440	298	150	L/R	11 (12)	2	264
ESL91.12344-x	2348 x 898 x 549	1804 x 754 x 440	367	195	L/R	11 (12)	3	396
ESL91.13244-x	2498 x 648 x 549	1954 x 504 x 440	316	155	L/R	12 (13)	2	288
ESL91.13344-x	2498 x 898 x 549	1954 x 754 x 440	389	210	L/R	12 (13)	3	432
Double-leaf, Interior depth 240 mm								
ESL92.12424	2348 x 1148 x 349	1804 x 1004 x 240	362	155	-	11 (12)	4	528
Double-leaf, Interior depth 440 mm								
ESL92.12444	2348 x 1148 x 549	1804 x 1004 x 440	437	262	-	11 (12)	4	528

You can find the tender text at: www.priorit.de

P_{Vmax} Recommended approximate values for the assembly and installation of a fire-resistant wall. A „derating“ of the electrical equipment must be taken into account. Compliance must be ensured with temperature rise limits in accordance with the applicable DIN EN 61439-1.



Power dissipation in normal operation at $\Delta T = 13\text{ K}$ (inside 35°C , outside 22°C), with on-site fan

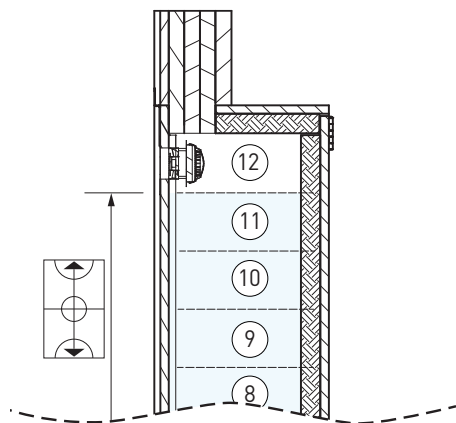


Options and accessories

- All PRIORIT surfaces, see page 44

Art.	Accessories	Height mm
Back wall		
ESL.RW-90-131	Back wall for free-standing installation of cabinet: 42 mm - suitable for all free-standing electrical cabinets PRIOELEC ESL90 / 1 panel width	2526
ESL.RW-90-132	Back wall for free-standing installation of cabinet: 42 mm - suitable for all free-standing electrical cabinets PRIOELEC ESL90 / 2 panel widths	2526
ESL.RW-90-133	Back wall for free-standing installation of cabinet: 42 mm - suitable for all free-standing electrical cabinets PRIOELEC ESL90 / 3 panel widths	2526
ESL.RW-90-134	Back wall for free-standing installation of cabinet: 42 mm - suitable for all free-standing electrical cabinets PRIOELEC ESL90 / 4 panel widths	2526
Technical ventilation		
EBEL-VENT-L230R2-OT	Ventilation system, consisting of fan and smoke detector, ready for connection (230 V AC)	
EBEL-VENT-L24R2-OT	Ventilation system, consisting of fan and smoke detector, ready for connection (24 V DC)	

Example:



If the EBEL-VENT-L230R2-OT or EBEL-VENT-L24R2-OT fan unit is retrofitted, the usable height is reduced by one height unit.

Subject to technical changes. | Status: 05.04.2024

