



Fire  
Resistance  
**90 Min.**



Fire  
Resistance  
**30 Min.**



**Smoke**  
Protection  
min leakage



Material  
+ Decor  
**A2** Class



# PRIOELEC EW

## Electro Wall Recessing Cabinet

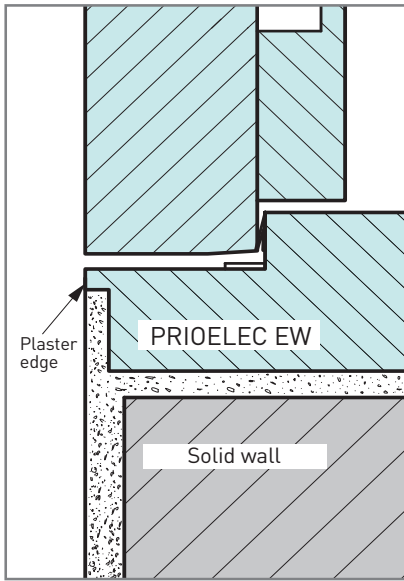
PRIORIT electro wall recessing cabinet in single-leaf design, suitable for maintenance of performance of safety systems in the event of fire for 30/90 minutes. The housing is made of non-combustible fire protection panels of class A2 - s1, d0. As a standard, cabinets are prepared for cable entries from top and bottom. The inside dimensions are based on the standard distribution panels.

Functional endurance is to be demonstrated according to MLAR 5.2.2 c) and documented.

It must be ensured in each individual case that the function of the electrical installations is guaranteed for the necessary duration of the functional maintenance in case of fire.

### Function

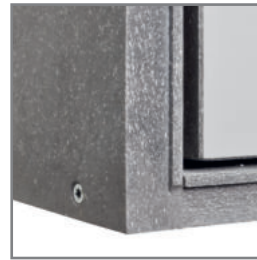
- Fire resistance of 30/90 min, fire-retardant, fire resistant
- Classification: Suitable for maintenance of performance for 30/90 minutes
- Smoke protection



■ Detail wall joint



■ Stainless-steel hinges



■ Plaster edge detail



■ Fastening system

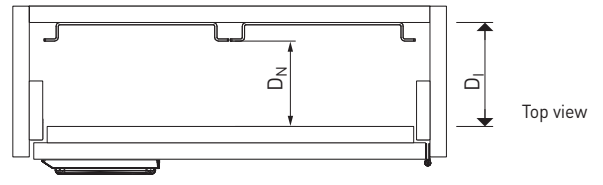
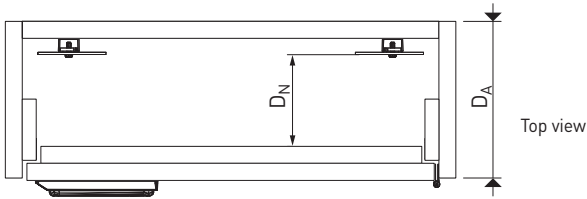
## Construction

- Empty case for wall recessing
- Door can be unhinged
- Door hinge right, may be changed on site to the left
- Door closes flush with body, opening angle ca. 180°
- 2-point door locking with swing lever and double-bit cylinder
- Circumferential fire seals automatically expand in the event of a fire
- Cable entry top + bottom
- Fastening system for electric installations

## Material characteristic

- Non-combustible board with surface coating, classified A2 – s1, d0
- Standard CPL surface
- Colour light grey, similar to RAL 7035, edges and bevels in different colour

Effective internal depths

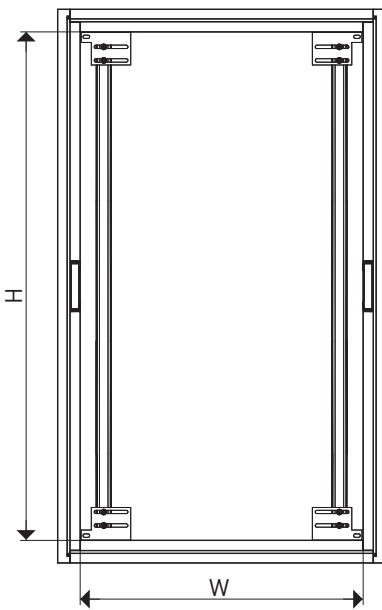


Effective depth  $D_N$  with C-rail:

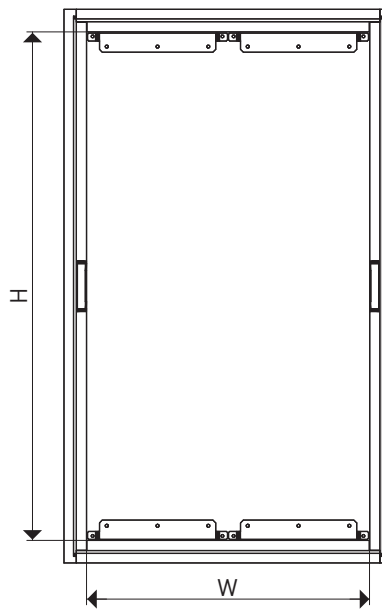
- EW31 / EW91: 108 mm

Effective depth  $D_N$  with EDF system:

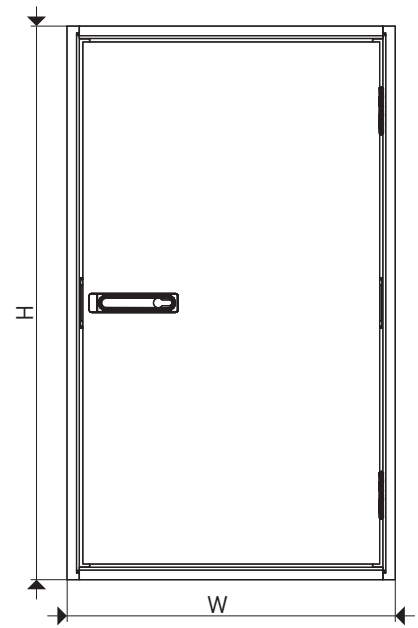
- EW31 / EW91: 104 mm



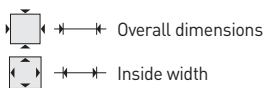
Inside view with C-rail, standard



Inside view - EDF mounting (option)



Front View



Art.								
x = DIN 1	H x W x D <sub>A</sub> mm	H x W x D <sub>I</sub> mm	kg	P <sub>Vmax</sub> = W	DIN = x			

**Fire resistance 30 minutes**

Interior depth 129 mm

EW31:04111-x	682 x 332 x 205	600 x 250 x 129	37	10	R	04	1	48
EW31:04211-x	682 x 582 x 205	600 x 500 x 129	58	20	R	04	2	96
EW31:06111-x	982 x 332 x 205	900 x 250 x 129	55	15	R	06	1	72
EW31:06211-x	982 x 582 x 205	900 x 500 x 129	82	31	R	06	2	144

**Fire resistance 90 minutes**

Interior depth 129 mm

EW91:04111-x	682 x 332 x 205	600 x 250 x 129	37	10	R	04	1	48
EW91:04211-x	682 x 582 x 205	600 x 500 x 129	58	20	R	04	2	96
EW91:06111-x	982 x 332 x 205	900 x 250 x 129	55	15	R	06	1	72
EW91:06211-x	982 x 582 x 205	900 x 500 x 129	82	31	R	06	2	144

You can find the tender text at: [www.priorit.de](http://www.priorit.de)



**P<sub>Vmax</sub>** Recommended approximate values for the assembly in a fire-resistant wall. A „derating“ of the electrical equipment must be taken into account. Compliance must be ensured with temperature rise limits in accordance with the applicable DIN EN 61439-1.

**Options and accessories**

- All PRIORIT surfaces, see page 44

Art.	Description
SUJ-WINKEL-EW-1FB	EDF fixing cross beam with 1 panel width, including mounting hardware
SUJ-WINKEL-EW-2FB	EDF fixing cross beam with 2 panel widths, including mounting hardware