



Fire
Resistance
90 Min.



Material
+ Decor
A2 Class



PRIOHYD

Integral Shaft Enclosures for Fire Extinguishing Equipment according to DIN 14461

A standardised fire and smoke protection system for the installation of fire extinguishing equipment per DIN 14461 has become available for vertical shafts for the first time: wall hydrants, discharge points and feed-in systems can be simply and quickly placed directly into the shaft wall with PRIOHYD without further panelling.

Function

- Fire resistance of 90 minutes
- For Extinguisher hose installations and wall hydrants according to DIN 14461
- Protection against drafts, cold smoke and hot combustion gases
- Proof of expert opinion



- Arrangement on-site and positioning the PRIOHYD with a jack lift



- Side and rear components are prepared with a bulkhead cuff for passing pipes through



- PRIOHYD for the installation of a wall fire hydrant on-site



- PRIOHYD without doors for installation of systems on-site

Construction

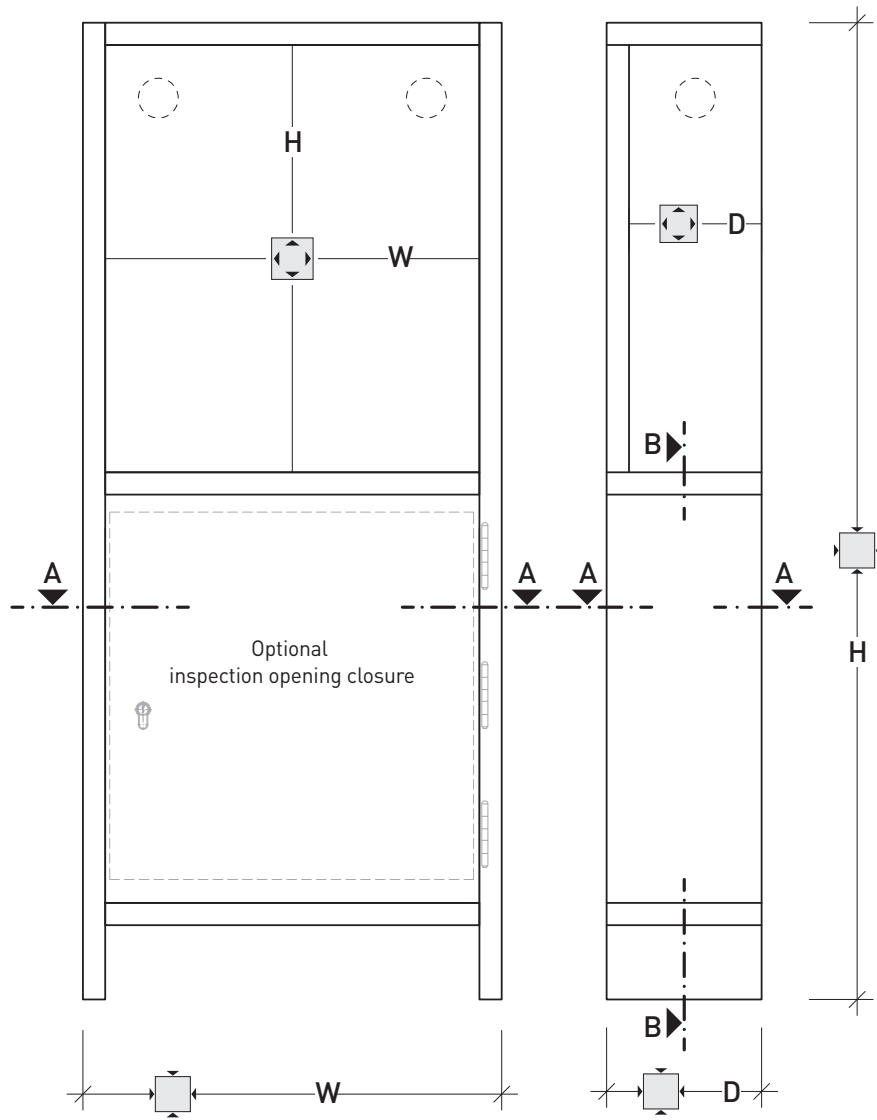
- Housing with high mechanical resistance
- Installation in solid shaft walls (masonry, concrete)
- Installation in single-sided planked GKF shaft walls
- Installation in PRIOWALL wall system
- Seal-off of the extinguisher technology from the service shaft
- PRIOHYD without acrylic glass door for installing built-in steel wall cabinets with extinguisher technology from various manufacturers
- PRIOHYD with optional inspection opening closure for entry into the shaft and inspection of riser cables and technology
- Extinguisher technology's weight transfer to storey floor

Material characteristic

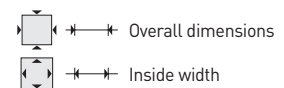
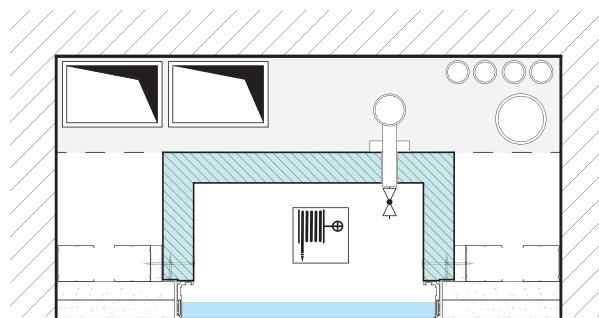
- Non-combustible board with surface coating, classification A2 - s1, d0
- Standard CPL surface
- Standard colour light grey - similar to RAL 7035, coloured edges and chamfers

Scope of delivery

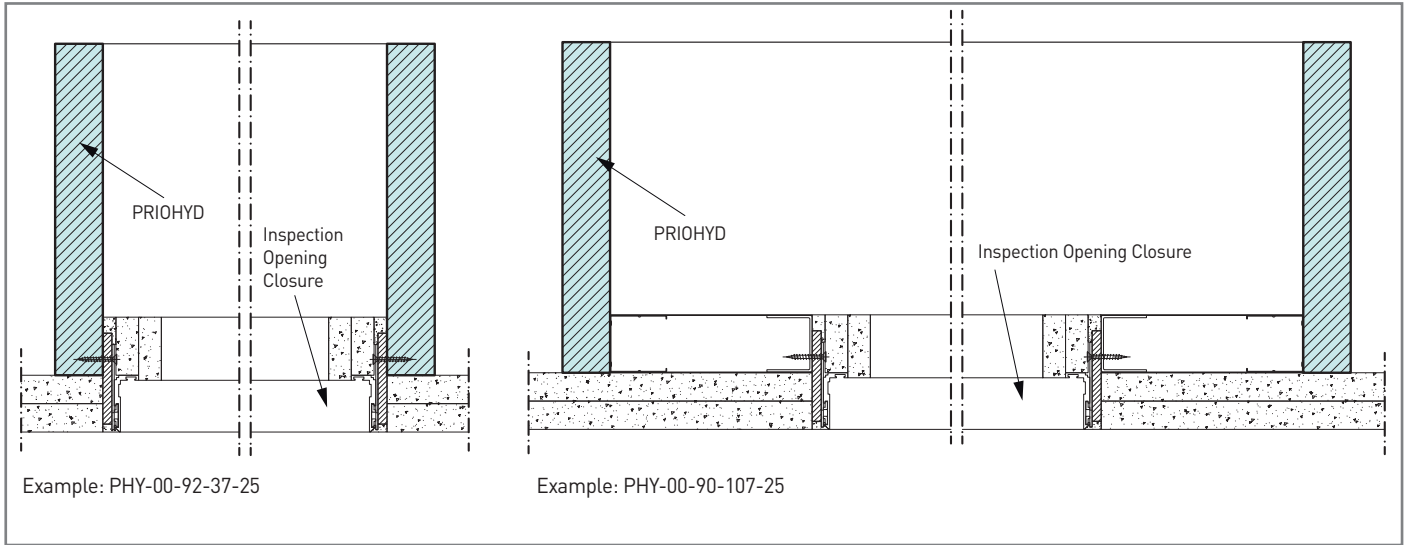
- Corpus
- Fire stop cuff for joining pipe
- Transportation aid for easy installation by using a jack lift
- Installation Instruction



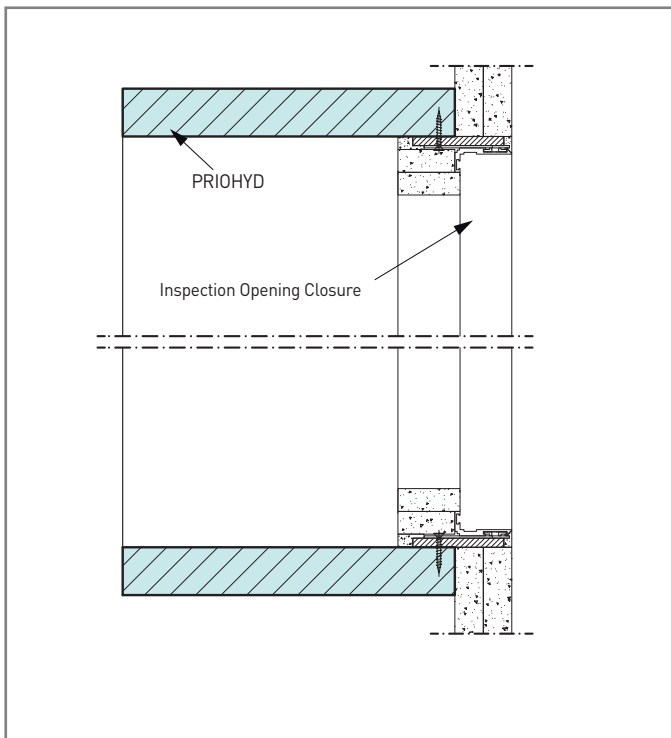
Installation situation



Installation details



Cut-out A-A – Horizontal cut through the PRIOHYD built-in shaft housing with installed inspection opening closure



Cut-out B-B – Vertical cut through the PRIOHYD built-in shaft housing with installed inspection opening closure

Subject to technical changes. | Status: 05.04.2024

Application example








- Integral shaft enclosure with acrylic glass cover door for the installation of a wall fire hydrant on-site
- With fire resistant inspection opening closure for inspection work in the shaft

Text for invitation to tender: www.priorit.de

Art.	H x W x D mm	
Empty enclosure for extinguishers up to 12 kg net weight as per DIN 14461-1		
 PHY-00-92-37-25	1702 x 454 x 292	920 x 370 x 250
PHY-1G-92-37-25		
Empty enclosure for wall hydrants with hose reel as per DIN 14461-1, 1-wing		
 PHY-00-82-72-25	1652 x 804 x 292	820 x 720 x 250
PHY-1G-82-72-25		
 PHY-00-107-72-25	1657 x 804 x 292	1070 x 720 x 250
PHY-1G-107-72-25		
 PHY-00-122-72-25-FM	1727 x 804 x 292	1220 x 720 x 250
PHY-1G-122-72-25-FM		
Empty enclosure for wall hydrants with hose reel as per DIN 14461-1, 2-wings		
 PHY-00-90-107-25	1692 x 1154 x 292	900 x 1070 x 250
PHY-2G-90-107-25		
PHY-2G-90-107-25-FM		
Empty enclosure for discharge points as per DIN 14461-2, 1-wing		
 PHY-00-42-32-14	1442 x 404 x 182	420 x 320 x 140
PHY-1G-42-32-14		
 PHY-00-57-32-14-FM	1602 x 404 x 182	570 x 320 x 140
PHY-1G-57-32-14-FM		
Empty enclosure for discharge points as per DIN 14461-2, 2-wings		
 PHY-00-72-62-25	1602 x 704 x 292	720 x 620 x 250
PHY-2G-72-62-25		
PHY-2G-72-62-25-FM		
Empty enclosures for feed-in systems as per DIN 14461-2, 1-wing		
 PHY-00-72-72-31	1202 x 804 x 352	720 x 720 x 310
PHY-1G-72-72-31		

Shut-off valve
 Wall hydrant type F: for self-help as well as for use by the fire brigade.
 Wall hydrant type S: self-help wall hydrants

PRIOHYD Integral Shaft Enclosures for Fire Extinguishing Equipment

		 kg					Description	Option: Inspection Cover H x W mm
108	-	-	-	■	-	-	Empty enclosure without door	ETXA91-0453-0267 External dimension 536 x 350
115	-	-	-	■	-	-	Empty enclosure with acrylic glass door	Internal dimension 453 x 267
143	■	S < 40 m F < 35 m	-	-	-	-	Empty enclosure without door	ETXA91-0503-0503 External dimension 586 x 586
155	-	-	-	-	-	-	Empty enclosure with acrylic glass door	Internal dimension 503 x 503
160	■	S < 40 m F < 35 m	-	■	-	-	Empty enclosure with shelf for housing fire extinguisher below without door	ETXA91-0258-0258 External dimension 341 x 341
176	-	-	-	■	-	-	Empty enclosure with shelf for housing fire extinguisher below with glass door	Internal dimension 258 x 258
170	■	S < 40 m F < 35 m	-	■	-	■	Empty enclosure with shelf for housing fire extinguisher and fire alarm below without door	-
188	-	-	-	■	-	■	Empty enclosure with shelf for housing fire extinguisher and fire alarm below with acrylic glass door	-
190	■	S < 40 m F < 35 m	-	■	-	-	Empty enclosure with sideways housed fire extinguisher without door	-
210	-	-	-	■	-	-	Empty enclosure with sideways housed fire extinguisher with acrylic glass door	ETXA91-0463-0463 External dimension 546 x 546
210	■	S < 40 m F < 35 m	-	■	-	■	Empty enclosure with shelf for sideways housed fire extinguisher and fire alarm with acrylic glass door	Internal dimension 463 x 463
55	■	-	-	-	-	-	Empty enclosure without door	ETXA91-0693-0217 External dimension 776 x 300
58	-	-	-	-	-	-	Empty enclosure with acrylic glass door	Internal dimension 693 x 217
62	■	-	-	-	-	■	Empty enclosure for a valve and a fire alarm without door	ETXA91-0703-0217 External dimension 786 x 300
66	-	-	-	-	-	■	Empty enclosure for a valve and a fire alarm with acrylic glass door	Internal dimension 703 x 217
126	■	-	-	■	-	-	Empty enclosure with shelf for sideways housed fire extinguisher without door	ETXA91-0553-0517 External dimension 636 x 600
135	-	-	-	■	-	-	Empty enclosure with shelf for sideways housed fire extinguisher with acrylic glass door	Internal dimension 553 x 517
135	■	-	-	■	-	■	Empty enclosure with shelf for sideways housed fire extinguisher and fire alarm with acrylic glass door	ETXA91-0553-0517 External dimension 636 x 600
139	■	-	-	-	-	-	Empty enclosure without door	Internal dimension 553 x 517
150	-	-	-	-	-	-	Empty enclosure with acrylic glass door	-

Subject to technical changes. | Status: 05.04.2024

 Fire extinguisher  Fire alarm



Four installation options

PRIOHYD without inspection opening closure



- Integral shaft enclosure for installing built-in steel wall cabinets

PRIOHYD with inspection opening closure



- Integral shaft enclosure for installing built-in steel wall cabinets
- With fire resistant inspection opening closure for inspection work in the shaft



- Integral shaft enclosure with acrylic glass cover door



- Integral shaft enclosure with acrylic glass cover door
- With fire resistant inspection opening closure for inspection work in the shaft

